




## DESIGN

A canoe is only as good as its design, and its design is only as good as its designer. At Dagger that's Steve Scarborough.

In the past decade, tremendous strides have been made in canoe building. Computer assisted design, previously limited to the world of yachts and other large craft, has become a valuable tool in canoe design. New shapes, thought to be impossible, have been created thanks to improved materials and manufacturing advances. And as canoeists' techniques have improved, especially in whitewater, fundamental changes have been required in the shaping of their craft.

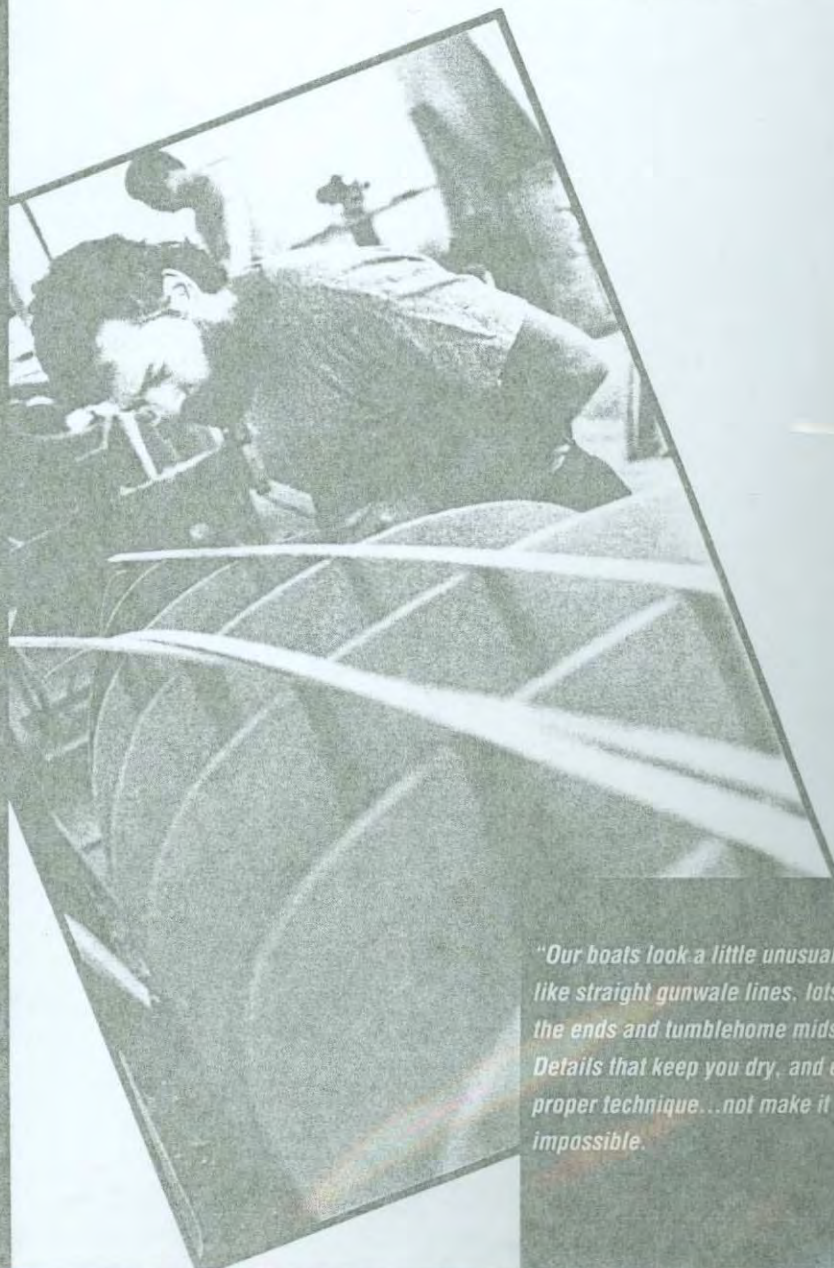
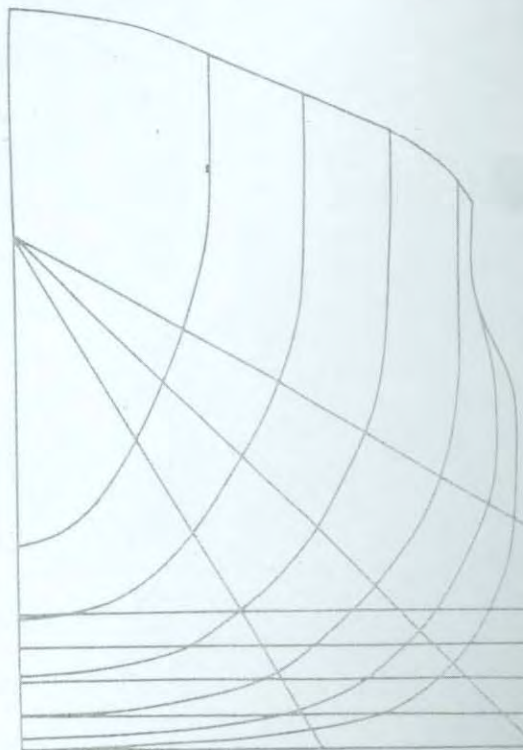


*"It's slow and expensive, but the wood-strip prototype method is still the only way to get a balanced design. You begin with a set of numbers, convert that to hull lines on paper, then to wooden forms covered with cedar strips. The wood-strip prototype is paddled, and then if the shape is just right you put it in production."*

Dagger represents the leading edge in modern design. Some canoes are still being built on outdated, ten year old ideas. Others just try to chop up shapes from several hulls and recombine them to achieve a "new" design.

All five of our models are entirely new, drafted by Steve Scarborough, combining uncanny technical design wizardry with the superb canoeing skills that have won him four national championships.

*"One theme is constant in our boats...putting as much performance capability into a canoe as its intended purpose allows. For a canoe to be truly enjoyable, it must not only perform well, but also be stable and forgiving. The modified shallow arc hull cross section of all Dagger canoes is unmatched in primary and secondary stability plus it achieves maximum performance. Other hull shapes, including the oft-touted shallow-V, are simply outdated for most applications. But, of course, other companies must sell what they've got!" - Steve Scarborough*



*"Our boats look a little unusual...things like straight gunwale lines, lots of flare in the ends and tumblehome midsections. Details that keep you dry, and encourage proper technique...not make it impossible."*

## CAPER

The standard of comparison in whitewater solo canoes, the **Caper** is a true high performance craft with exceptional maneuverability, lightning quick acceleration and, thanks to improvements for 1989, the driest ride available in a solo boat. Easy to roll and great for surfing waves and holes, the **Caper** makes an exciting big-water playboat. Unlike wider solo boats, the straight-line gunwale amidships allows for proper paddle strokes. Excellent primary and secondary stability with good tracking make **Caper** an easy boat to paddle, regardless of skill level. Center mounted kneeling thwart standard. Foam saddle or knee boots optional. *Designer's comments: "We've taken a hull with plenty of speed for blasting through those tight technical spots, and combined that with the spinning ability to make the cut the instant you get there. Sitting on a big wave in the **Caper** is a blast!"*

### SPECIFICATIONS

	CAPER	ENCORE
Length	14'4"	13'2"
Max. beam	31"	30"
Beam @ 4"w/l	29"	27 1/2"
Beam @ gunwales	31"	28 1/2"
Depth midsec.	15 1/2"	15"
Depth ends	17"	16 1/2"/16"
End height	23"	21"/20 1/2"
Rocker	5"	4 1/2"
Approx. wt.	56-62 lbs.	50-55 lbs.
Shape/ends	rounded flare	rounded flare
Shape/midsec.	straight	tumblehome
Hull symmetry	symmetrical	asymmetrical

\* bow/stern

All our canoes carry the unique Dagger Two Year Warranty.

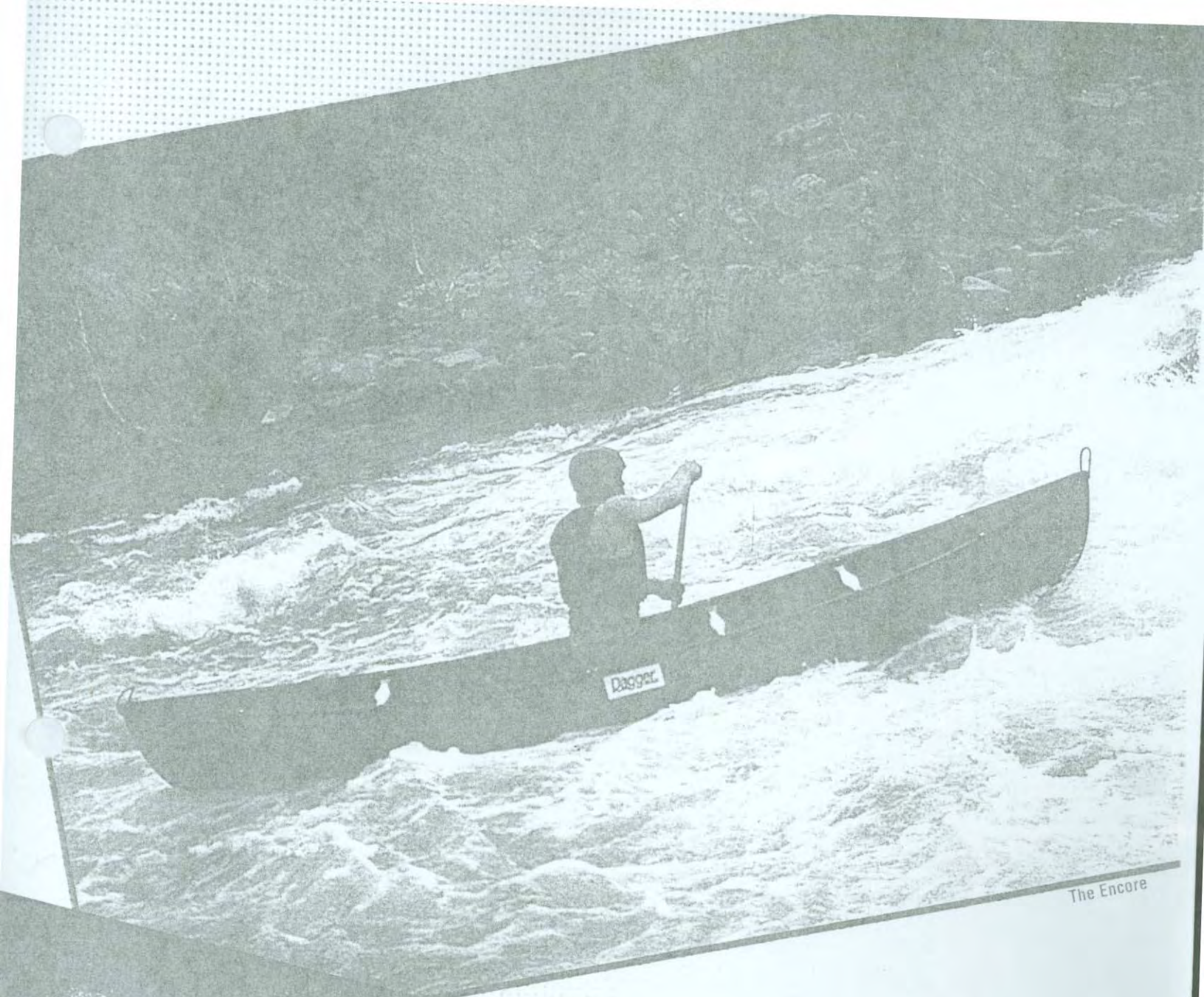
## ENCORE

Small and quick, the **Encore** is the high performance solo playboat for advanced paddlers. Combining slalom turning ability with explosive upstream acceleration, this is the hottest Royalex solo canoe available. Primary stability coupled with exceptional secondary stability allow the paddler to concentrate on the next hot move. The center depth and deep flared ends give an uncommonly dry ride and provide enough volume for larger paddlers, yet **Encore** is narrow enough at the gunwales for smaller paddlers to take effective strokes, too. Center mounted kneeling thwart standard. Foam saddle or knee boots optional. *Designer's comments: "The **Encore** is slightly asymmetrical giving it more speed. Its cross section shape makes for terrific dynamic stability. In motion, especially in turbulence, this boat is really solid! It has more secondary stability than any other 13-foot whitewater canoe. Above all the **Encore** is a playboat. It's easy to roll and great fun surfing waves or sidesurfing holes. Go ahead, play with the kayakers!"*

## SOLO CANOES



The Caper



The Encore



## DIMENSION

Unlike other Royalex canoes that masquerade as whitewater craft, the Dimension was designed from the bottom up for even the most difficult whitewater. It will spin into eddies where other tandem boats fear to venture. Deep flared ends all but guarantee dry running, and full rounded bilges give the Dimension excellent stability. Paddling positions close to center accentuate dryness, stability and maneuverability. Midsection tumblehome with a straight gunwale line, narrow enough for solo paddling, encourages proper strokes.

Tandem kneeling thwarts are standard, cane seats a no-charge option.

*Designer's comments: "I've dreamed of this beast for twelve years! We've had a blast paddling the Dimension tandem on the Ocoee... without flotation! I won't guarantee that everyone can do that the first time, but this boat is just so dry and stable, especially in those unexpected, turbulent moments. Just wait 'till you plant one on the face of a big wave!"*

## INTERLUDE

We've broken all the rules with Interlude! A fast, efficient flatwater boat of Royalex that is dry and turns well enough to handle whitewater. Sound impossible? Just try an Interlude. Thanks to some advanced design features, and our unique Royalex forming capabilities (plus a special engineered Royalex sheet), the Interlude is light, stiff and fast. Other claims about having the fastest Royalex canoe are now simply outdated. A unique asymmetrical rocker curve helps to carve smooth, graceful turns. And the rocker actually increases the speed of the boat, especially when combined with an efficient waterline beam and more arc in the cross-section than any of our other models. Reassuring secondary stability and surprising dryness make short work of moderate whitewater.

Cane seats are standard. Bow slider is optional.

*Designer's comments: "I've long wanted to design a good boat for our southern blackwater rivers. They require as much maneuvering as most whitewater, but you really want a boat that you can hammer in the straights. And they also need to be able to carry a couple days' gear. Building such a boat out of Royalex is a real plus...the Interlude's going to be hard to beat in the wildwater races this year."*

## LEGEND

Our top seller. If you need one canoe to handle all types of water, regardless of your skill level, the Legend has no equal! It's maneuverable and dry for superb whitewater performance, yet the Legend's speed and tracking ability compare favorably with most seventeen footers. The large carrying capacity and stability are ideal for families, sportsmen, camping and wilderness tripping. A rounded bow and stern reduce critical end wear.

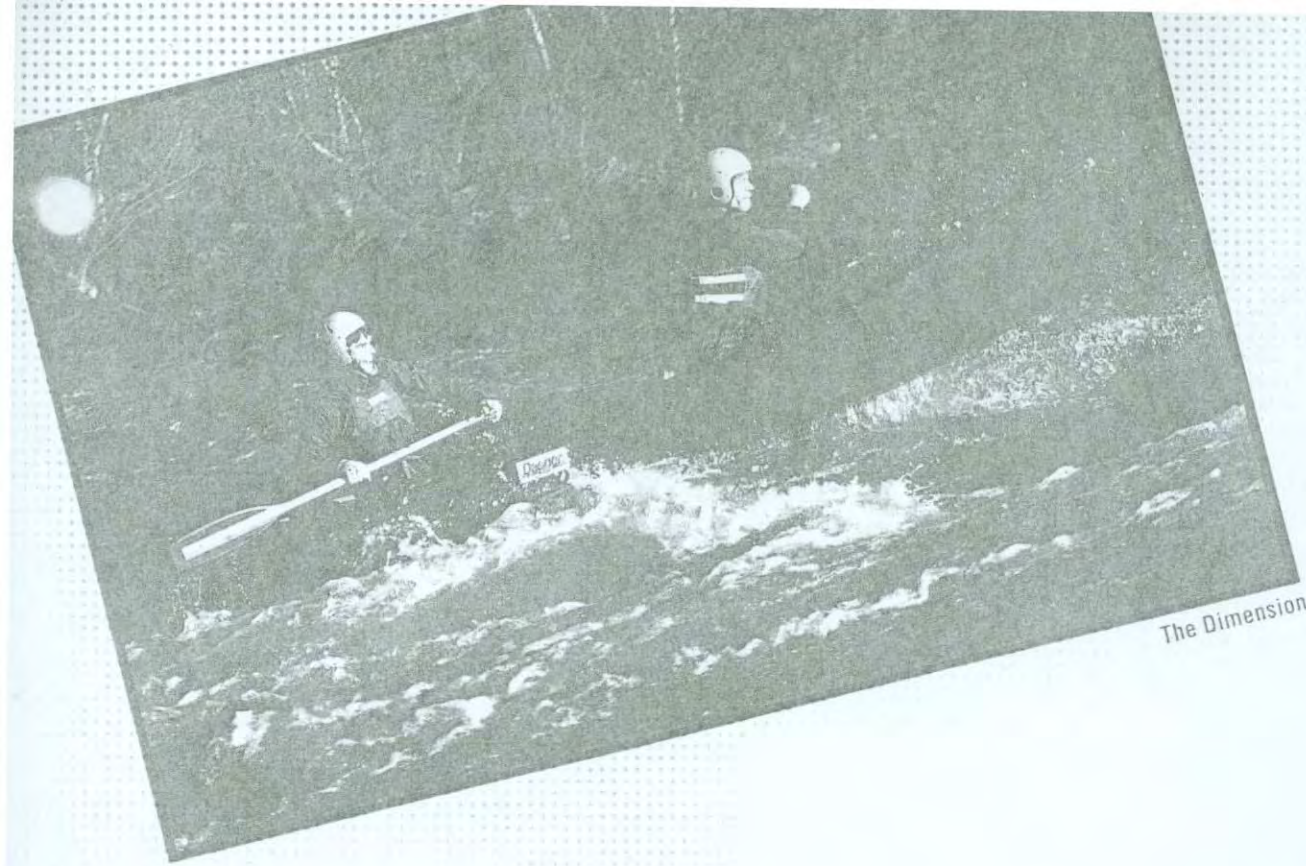
Cane seats are standard.

*Designer's comments: "Designing the Legend was quite a challenge. Unlike other Royalex canoes that claim to be versatile, we wanted the Legend to actually perform well in both whitewater and flatwater. And it does! It's so forgiving in whitewater, that it's easy to forget how responsive it is. But what is really revealing is to take the Legend out on a lake and crank off a few strokes, then watch the boat glide. Whitewater boats just aren't supposed to do that."*



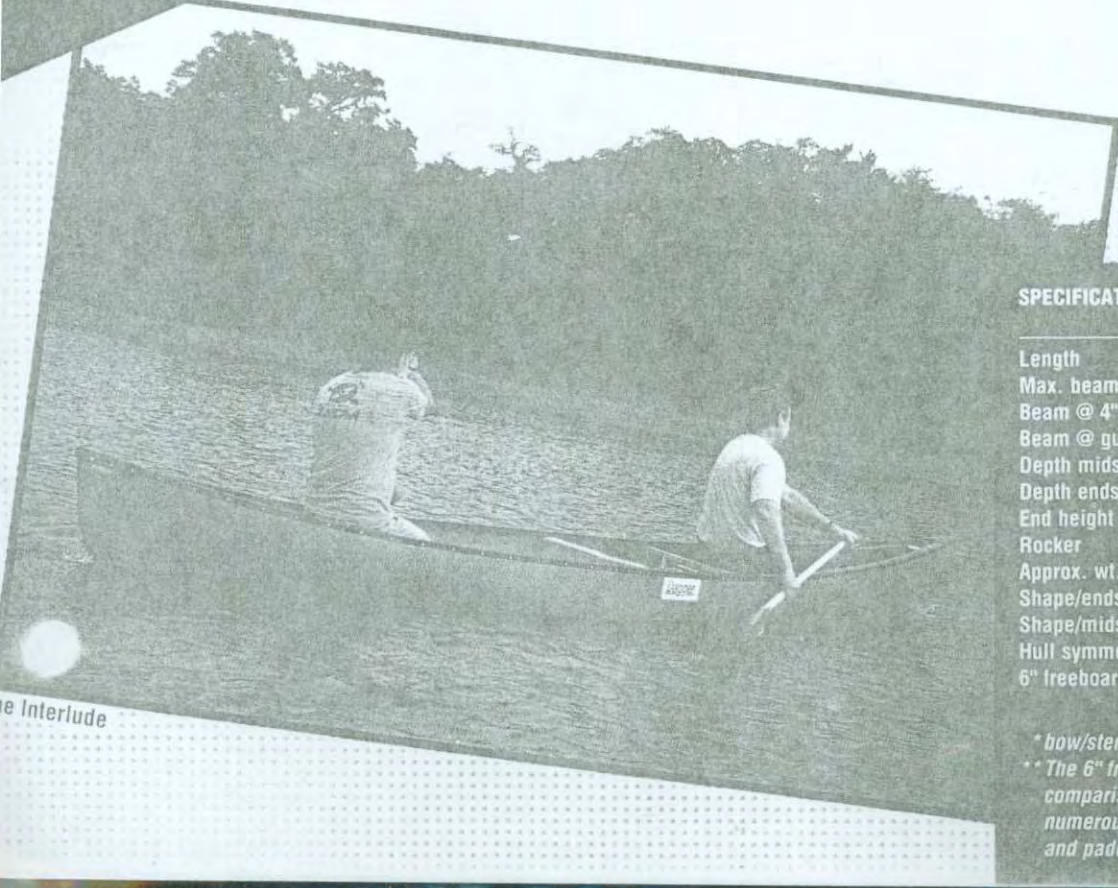
The Legend

All our canoes carry the unique Dagger Two Year Warranty.



The Dimension

## TANDEM CANOES



Interlude

### SPECIFICATIONS

	DIMENSION	LEGEND	INTERLUDE
Length	16'	16'	16'6"
Max. beam	34"	35"	34 3/4"
Beam @ 4" w/l	32 1/4"	33 1/2"	32"
Beam @ gunwales	33"	35"	34 3/4"
Depth midsec.	15"	14 1/2"	14"
Depth ends	17 1/2"	16 1/2"	17 1/2"/16"
End height	24 1/2"	23"	23"/20 1/2"
Rocker	5 1/2"	2"	2 1/2"/1 1/2"
Approx. wt.	68-74 lbs.	68-74 lbs.	60-65 lbs.
Shape/ends	rounded flare	slight flare	slight flare
Shape/midsec.	tumblehome	straight	straight
Hull symmetry	symmetrical	symmetrical	asymmetrical
6" freeboard capacity	—	1200 lbs.**	850 lbs.**

\* bow/stern

\*\* The 6" freeboard capacity is presented for volume comparison only. Actual safe load capacity depends upon numerous factors including hull shape, water conditions and paddler skills.

## QUALITY

Dagger is committed to creating and building the finest canoes available. Our wooden gunwales are made from select Northern White Ash, treated with at least three coats of Deks Olje<sup>®</sup>, a Scandinavian penetrating oil known for protecting wood without graying with age. Our vinyl gunwales are internally reinforced with a custom aluminum extrusion (except on the Interlude). All nuts and bolts are top quality stainless steel, and notice how all bolts are counter-sunk on our ash-gunwaled boats. All bolts fit their application to a tee...no two inch excesses hanging out to rip flotation bags. Even our grab loops are a nylon kernmantle rope, custom made for us by a prominent mountaineering products company.

The heart of any canoe is the hull, and we've chosen Royalex as our sole material. In fact, we're the only major canoe manufacturer specializing in Royalex to this degree. Royalex, a laminate of ABS, cross-linked vinyl and ABS foam, is simply the strongest material currently available for the manufacture of canoes. And our's is quite special (in spite of the fact that we've made up no special name for it!). Not only do we add extra reinforcing in critical areas, we process the sheet in a unique way that maximizes its strength and stiffness. You see, Roy Guinn, Peter Jett and the rest of our staff have many decades of experience in making Royalex canoes. In fact, before bringing you Dagger, they were behind some of the top names in the whitewater business.

### YOU'RE PROTECTED BY THE BEST WARRANTY IN THE BUSINESS.

We know what we're doing, and we're so confident that our product is superior that we're offering a limited Two Year Warranty on the entire canoe! That's twice as long as the warranty of other Royalex canoes! Compare. We're confident that you'll be impressed.

**Dagger**<sup>TM</sup>  
CANOE COMPANY, INC.

P.O. Box 1500  
Harriman, TN 37748  
(615) 882-0404

*Desk Copy*

